

DV-LED All-in-One Window Displays

116" | 157" | 231"



Out-of-the-box solution for seamless large-scale advertising; ideal for storefront windows

Biggest, Brightest Window Display

With an incredible ultra-high brightness of 2,200cd/m², these DV-LED displays are three times as bright as our standard LCD displays and have a much higher contrast ratio. Bring the WOW factor to your window space with these super-large, super-bright displays!



All-in-One Packaged Solution

From the direct view LED panels to the height-adjustable floor stand, this out-of-the-box solution includes everything needed to get your display up and running in no time at all. Gain all of the benefits of DV-LED without any of the hassle.



High Brightness
LED Modules

+



Mounting
Bracket

+



Protection
Edge



Effortless Assembly & Install



Easy Front Serviceability



Super Slim Cabinets



Standard Aspect Ratios



Silent Operation



Ultimate Durability



Installation Service Available



3-Year Warranty



Lifetime UK-Based Support

Other Features

Effortless Installation & Maintenance

These displays are designed for hassle-free setup and service-ability, with easy access built-in. No matter what your level of experience with DV-LED solutions, installing and maintaining these displays couldn't be easier.



Quick and Easy Install



Ultra-Quiet Operation

Unlike window displays that use LCD panels, displays that utilise DV-LED technology do not require a cooling system. Not only does this allow DV-LED displays to run silently, it also makes them more robust and reliable as there are no moving parts.



Super Slim Cabinets

The standout feature of these displays is how incredibly thin the cabinets are. At just 31.4mm in depth they are slimmer than most LCD displays despite their large size.



Flexible Mounting Options

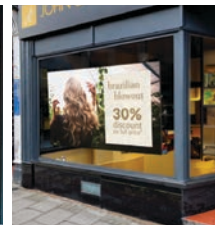
To ensure the cleanest install we can offer multiple installation methods. From mounting on wall surfaces to freestanding floor stands our various designs ensure a sleek, modern display with integrated cable management so all the focus is on your content.



Floor Stand



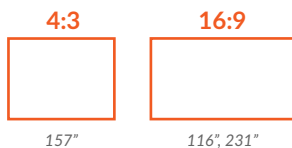
Surface Mount



Ceiling Mount

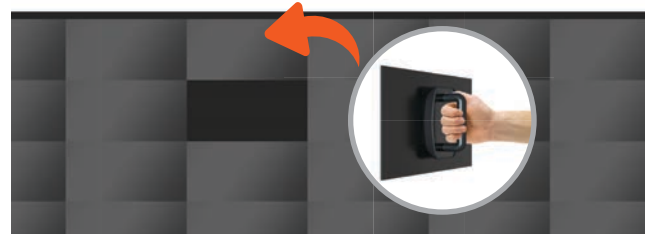
Standard Aspect Ratios

Our pre-set solutions come in standard aspect ratios of 16:9 and 4:3 meaning you can worry less about editing your content to fill the displays. We can also create more bespoke sized displays to help fill your window if required.



Installation Service Available

To remove all of the hassle from projects involving these displays we can provide a white-glove assembly and installation service if required. From constructing the framework to hanging the modules and connecting the cables, our expert team will take care of everything.



3-Year Warranty & UK-Based Support

A three-year manufacturer's warranty gives total peace of mind that any issues will be resolved quickly and easily with minimal screen downtime. Even after the warranty period expires, these displays also come with UK-based lifetime technical support, which is completely free of charge.



3-Year Warranty



Lifetime Technical Support

Freestanding Totem Version Available

We can offer a whole range of DV-LED solutions suitable for your window display including our special Freestanding DV-LED totem style display also available at the same fantastic brightness of 2,500cd/m².



Key Features



2,200CD/M² SUNLIGHT READABLE



CAPTIVATING IMAGE QUALITY



ULTRA-HIGH CONTRAST RATIO



EASY SERVICEABILITY



OPTIMISED FOR WINDOW DISPLAYS



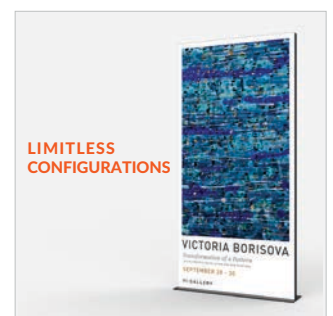
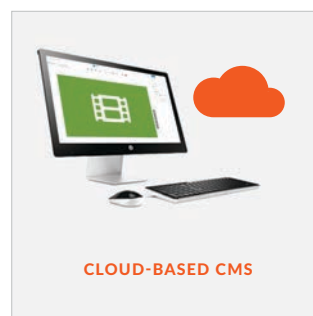
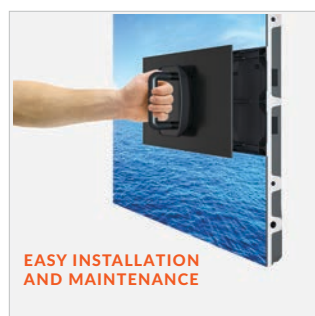
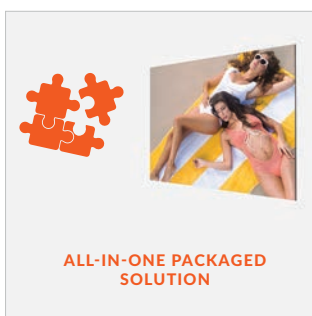
SEAMLESS VIDEO WALL



MULTIPLE MOUNTING OPTIONS



SLIM LIGHTWEIGHT CABINETS



Specification Table

		116"	157"	231"
LED Display	Resolution (px)	1024x576	1280x960	2048x1152
	Pixel Pitch (mm)	2.5mm		
	LED Type	SMD2121		
	Pixel configuration	1R1G1B		
	Brightness (Calibrated)	2,200cd/m ²		
	Refresh Rate	3840Hz		
	Contrast Ratio	6,500:1		
	Viewing Angle - Horizontal	170°		
	Viewing Angle - Vertical	170°		
	Processing	12 bit		
	Frame rate	60 fps		
	Maintenance	Front Service		
Mechanical	Unit Size (mm)	2560x1440x31.4	3200x2400x31.4	5120x2880x31.4
	Net Weight (Kg)*	74.4	155	297.6
Power	Input Voltage	AC220/110 ± 10%, 47~63Hz		
	Average Power Consumption (W)	396	825	1584
Environmental	IP Rating	IP40		
	Operating Temperature	-10°C to +60°C		
	Operating Humidity	10% to 80%		
	Lifetime	100,000 hours		
Computer	Media Formats	Video (MPG, AVI, MP4, RM, RMVB, TS), Audio (MP3, WMA), Image (JPG, GIF, BMP, PNG)		
	Media Resolution	1920x1080/1080x1920	3840x2160/2160x3840	
	Internal Memory	32GB		
	CPU	Quad-Core Cortex-A17@1.61GHz	Rockchip RK3399 @1.8GHz	
	GPU	Mali-T760 MP4 @600MHz	Mali-T860 MP4 @600MHz	
	RAM	4GB DDR3		
	USB	USB2.0 HOST (x4)	USB2.0 HOST (x2), USB3.0 HOST (x2)	
	LAN	10/100Mb/s Ethernet		
	Wi-Fi	802.11b/g/n	802.11b/g/n/ac	
	OS	Android 7.1	Android 10	
	Graphic Engine	OpenGL ES 1.1/2.0/3.0/3.1, OpenCL 1.1, Renderscript, Direct3D 11.1		
	Accessories	Included	TBC	
Optional		TBC		
Warranty	Warranty Period	3 Year Warranty		
	Technical Support	Lifetime		

Errors and omissions excepted

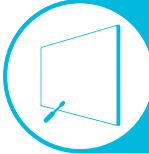
*Excluding mount

Why Choose Our Commercial Display Solutions?



Lifetime Technical Support

From the moment you receive your product, throughout the duration of your warranty and even after your warranty has expired we are here to support you. If you require any assistance setting up or using your product, or have any problems at all, we can provide free technical support via telephone and email.



On-site Support and Maintenance*

If needed, we can provide an installation service for any of our products. We can also set up service-level agreements for larger projects that require maintenance contracts.



Extended Warranty*

All of our commercial display products come with a 3 year commercial warranty as standard but if you want to extend this you can upgrade this to cover a 5 year period at point of purchase.



Training

As well as providing free remote CMS training sessions and webinars we can also visit you to deliver bespoke training for our software and hardware*.



Advanced Replacements†

Should your display suffer from any kind of hardware failure during the warranty period we will send you an advanced replacement and arrange for your old display to be collected, free of charge. This ensures no downtime where you are without a screen.



Custom Product Testing & Configuration

If you need us to test third party software or a website, or configure your screen in a particular way before it is dispatched (e.g. in a particular orientation or network mode), we can do so to make your life easier.



3D Rendering

Want to know how a particular screen will look once installed? Send us a photo of the location and we will create a 3D rendering of any screen in situ to help you to visualise how amazing it will look.



Logistics Support

We hold more stock in our UK warehouse than any other manufacturer so we can help you meet tight deadlines. For last minute orders we can also offer special express or morning delivery options*. We also carry out UK based quality control checks on every display before it leaves our warehouse.



Project Support

If you need to loan a sample unit to test we'd be more than happy to arrange this. We can also provide a rental service for temporary projects*.



Customisation*

Your display can be customised to suit your requirements by adding your logo or printed graphics or even tailoring the colour of a display. We can also carry out hardware modifications to existing products or manufacture bespoke solutions for special projects.



Extras*

As well as being able to provide accessories and add-ons, such as extra remote controls, NUC PCs and video wall controllers, we can also supply custom made flight cases which are great if a display needs to be moved safely from place to place.

†UK mainland only

*These particular services may incur additional charges