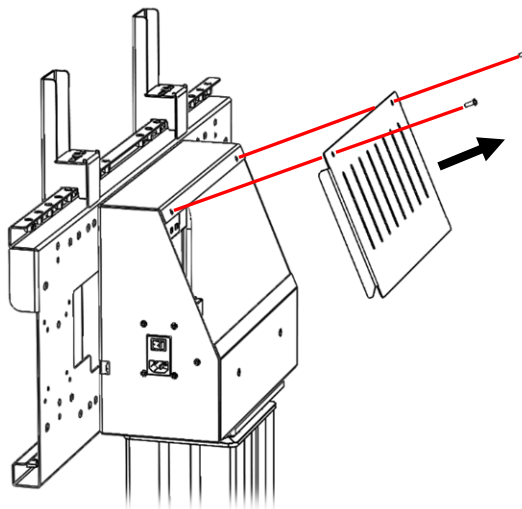


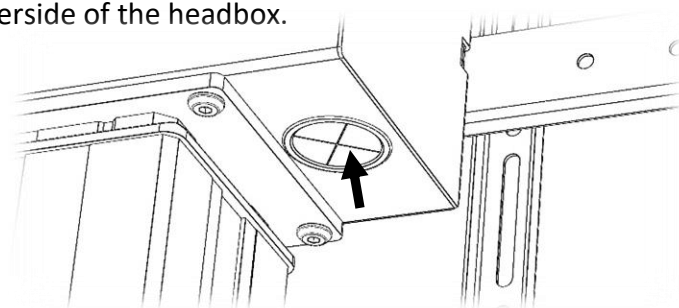
## Anti-Crush Bumper - 8971

*Before starting the anti-crush bumper installation: the screen must be installed on the lift and the lift must be turned off and unplugged.*

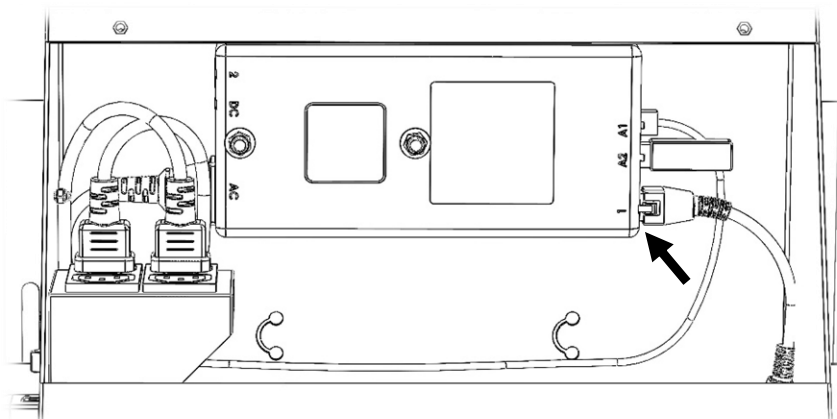
1. Clean the underside of the screen where the tape is to be mounted using the cleaning wipe provided.
2. Peel the self-adhesive backing from the bumper tape and apply the tape to the underside of the screen.
3. Remove the rear cover from the head box.



4. Pass the 3.5mm jack from the anti-crush bar through one of the grommets located on the underside of the headbox.

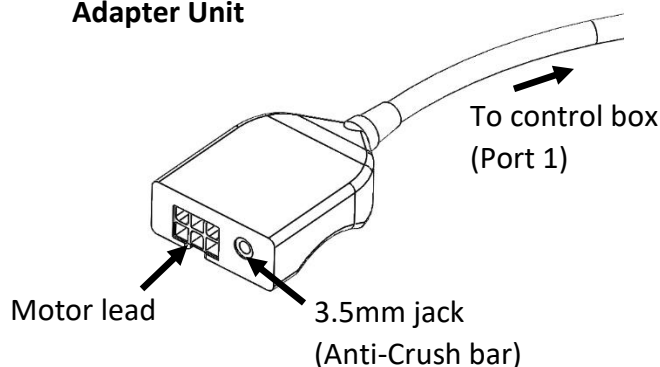


5. The control box for the motor is located inside the headbox, unplug the motor lead from port 1.

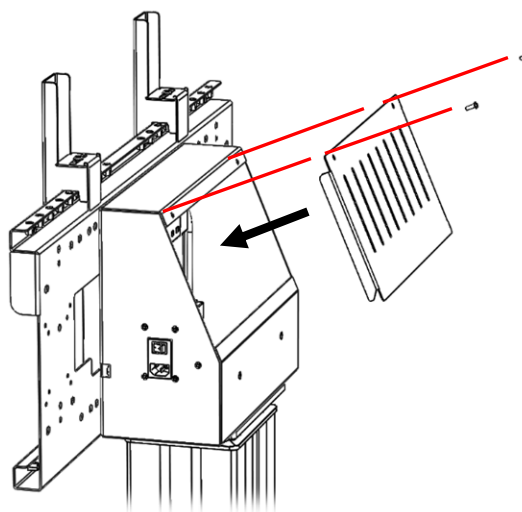


6. Plug the adapter into port 1 of the control box, then plug the motor lead into the adapter, next plug the 3.5mm jack from the anti-crush bumper into the adapter.

#### Adapter Unit



7. Before use, it is important to test the lift. Plug in the lift and drive the lift to its lowest position and back up. Then drive the lift down, whilst driving the lift down press on the anti-crush bumper, if the anti-crush bumper is operating correctly the lift should stop and reverse a short distance.
8. If the anti-crush bumper is operating correctly, replace the cover on the back of the headbox and secure with M4 bolts removed earlier.



9. The lift can now be operated normally and will stop if an object contacts the anti-crush bumper.