

## INFORMATION

## 86" Interactive 4K LCD Touchscreen with integrated annotation software



The TE8614MIS-B2AG is a visionary 4K UHD [Google EDLA Certified](#) interactive display that sets a new standard for ingenuity and performance. Crafted with precision, it features a Zero Airgap LCD screen that eradicates parallax, alongside the accurate PureTouch-IR+ with Palm Rejection, ensuring seamless interaction. Powered by iiWare 12E with Android 13 and equipped with WiFi connectivity, it effortlessly integrates into your ecosystem, supported by the iiyama (DMS) Device management platform.

Experience unparalleled wireless sharing capabilities with the intuitive iiyama Share and [EShare](#) app, facilitating seamless brainstorming and effective collaboration within your enterprise or educational institution.

With its innovative 4K Interface and [customizable User Profiles](#), the TE8614MIS-B2AG offers a personalized experience, granting easy access to bespoke applications and Cloud Drives. Adapted to thrive in bustling hybrid environments, it becomes a tailored solution for diverse user needs, revolutionizing collaboration, communication, and engagement.

Transforming modern workplaces, educational realms, and dynamic meeting spaces, this display emerges as an essential cornerstone, nurturing progress and connectivity beyond boundaries.



## Google EDLA Certified

Google Enterprise Device License Agreement allows Google apps, accounts, files, and collaborative tools to be easily accessed directly from the Google EDLA certified iiyama displays, offering seamless integration with the Google ecosystem and the entire Microsoft 365 suite for enhanced user experience, productivity, and collaboration in all environments, especially the education and enterprise sectors alike.



## PURETOUCH-IR+

The state-of-the-art PureTouch-IR+ technology ensures accurate and precise touch responses, enabling effortless interaction and annotation.



## iiyama DMS

iiyama DMS provides organizations with a convenient and fast unified management solution for terminal equipment, builds an efficient and real-time equipment management system, helps digitize the campus/office estate environment and makes device management ultra convenient. iiyama DMS is committed to maintaining compliance with GDPR.



## Multi-Window Mode

- You can easily read and control your content when standing in front of your audience. Simply can drag and drop information between the apps. The windows are flexible, easy-to-use, designed specifically for large screen presentation and education.

## SPECIFICATION

### 01 DISPLAY CHARACTERISTICS

<b>Design</b>	Thin bezel
<b>Diagonal</b>	85.6", 217.4cm
<b>Panel</b>	VA, haze 25%
<b>Touch Glass</b>	Anti-Gloss treatment, Anti-Glare glass, Matt polished surface, Ultra smooth writing, Zero Air-Gap
<b>Native resolution</b>	3840 x 2160 (8.3 megapixel 4K UHD)
<b>Aspect ratio</b>	16:9
<b>Brightness</b>	450 cd/m <sup>2</sup> (max.)
<b>Light transmittance</b>	92%
<b>Static contrast</b>	4000:1
<b>Dynamic contrast</b>	5000:1
<b>Response time (GTG)</b>	6.5ms
<b>Viewing zone</b>	horizontal/vertical: 178°/178°, right/left: 89°/89°, up/down: 89°/89°
<b>Colour support</b>	1.07B 10bit (8bit + Hi-FRC) (NTSC 72%)
<b>Horizontal Sync</b>	30 - 135kHz
<b>Viewable area W x H</b>	1895 x 1066mm, 74.6 x 42"
<b>Bezel width (sides, top, bottom)</b>	16.5mm, 16.5mm, 41mm
<b>Pixel pitch</b>	0.494mm
<b>Bezel colour and finish</b>	black, matte

### 02 TOUCH

<b>Touch technology</b>	PureTouch-IR <sup>+</sup>
<b>Touch points</b>	50, 10pt writing (HID, only with supported OS, 40pt Touch with Android)
<b>Touch accuracy</b>	+/- 1mm
<b>Touch method</b>	stylus, finger, glove (Passive pen, Opaque objects)
<b>Touch interface</b>	USB
<b>Supported operating systems</b>	All iiyama monitors are Plug & Play and compatible with Windows and Linux. For details regarding the supported OS for the touch models, please refer to the driver instruction file available in the downloads section.
<b>Palm rejection</b>	yes

### 03 INTERFACES / CONNECTORS / CONTROLS

<b>Digital signal input</b>	HDMI x4 (2.0, max. 3840x2160 @60Hz, YUV420/ YUV444/ RGB444) DisplayPort x1 (2.1, max. 3840x2160 @30Hz) USB-C x2 (3.2 (Gen 1, 5Gbit), 3840x2160 @60Hz (RGB444), DP 1.2 Alt mode, Touch, 1x front: 100W PD , 1x back: 15W PD)
<b>Audio input</b>	Mini jack x1

<b>Monitor control input</b>	RS-232c x1 (DSUB 9pin) RJ45 (LAN) x1 (LAN Control) IR x1
<b>Digital signal output</b>	HDMI x1 (2.0, max. 3840x2160 @60Hz, MSD (Multi-Screen Display)) USB-C x1 (3.2 (Gen 1, 5Gbit), 3840x2160 @60Hz, DP 1.2 Alt mode, Touch, 5W PD, MSD (Multi-Screen Display))
<b>Audio output</b>	S/PDIF (Optical) x1 Mini jack x1 Speakers 2 x 18W (Facing up), 2x 8W (Front facing)
<b>HDCP</b>	HDMI: 2.3 + 1.4, DP: 2.3 + 1.3, USB-C: 2.3 + 1.3
<b>USB ports</b>	x6 (media playback / peripherals / storage – front side: 2x v.3.2 (Gen 1, 5Gbit), 1x USB-C v.3.2 (Gen 1, 5Gbit, 100W PD), back side: 2x v.3.2 (Gen 1, 5Gbit), 1x USB-C v.3.2 (Gen 1, 5Gbit, 15W PD))
<b>RJ45 (LAN)</b>	x2 (Auto switch for PC & Android, 1000MB)
<b>Microphone</b>	8-Array (8m voice pick-up, Front facing)

## 04 FEATURES

<b>Integrated software</b>	iiWare 12E (Android 13 OS) featuring iiyama DMS, Google EDLA, Note, web browser, file manager, cloud drives, WPS office, iiyama Share and EShare for wireless connection with Windows/iOS/Android devices
<b>WiFi</b>	yes (WiFi 6 Module OWM002 - Dual WiFi Bandwidth: 2.4GHz/5GHz, WiFi Standard: IEEE 802.11 a/b/g/n/ac/ax, Bluetooth Support: 2.1+EDR/ 3.0/ 4.x/ 5.0)
<b>Hardware</b>	CPU: A76*4+A55*4(2.4GHz), GPU: Mali G610 MC4, RAM: 8GB, ROM: 64GB
<b>Extra</b>	WiFi 6 Module (OWM002), Slot for optional OPS Slot PC, 4x Touch pen (anti-bacterial coating)
<b>Kiosk mode</b>	yes
<b>Max. non-stop operating time</b>	24/7
<b>Glass thickness</b>	3mm
<b>Glass hardness</b>	7H
<b>Housing (bezel)</b>	metal
<b>OSD key lock</b>	yes

## 05 GENERAL

<b>OSD languages</b>	EN, DE, FR, ES, IT, RU, CZ, NL, PL, SV, FI, DA, NB
<b>Control buttons</b>	Power button, Power Indicator, Remote Sensor, Light Sensor, USB-C Connector (3.2)
<b>User controls</b>	general settings (input, volume, backlight), display settings (auto brightness, ECO, eye care, paper eye care, picture mode, brightness, contrast, saturation, sharpness, colour temp., advanced settings), audio settings (audio mode, volume, bass, treble, balance, mute), screen settings (pixel shift, auto light, , ECR), application settings (network & internet, apps, storage, personal, Google, advanced, administration, system, about)
<b>Blue light reducer</b>	yes
<b>Plug&amp;Play</b>	DDC2B
<b>Warranty</b>	5 years (for details and eligible countries please check the Warranty section of our website)

## 06 MECHANICAL

**Orientation** landscape

<b>Fanless design</b>	yes
<b>VESA mounting</b>	800 x 600mm
<b>Operation temperature range</b>	0°C - 40°C
<b>Storage temperature range</b>	- 20°C - 60°C
<b>MTBF</b>	50.000 hours (excluding backlight)

## 07 ACCESSORIES INCLUDED

<b>Cables</b>	power, USB, HDMI
<b>Touch pen</b>	x4 (Dual function tips, Anti-Bacterial)
<b>Guides</b>	quick start guide, safety guide
<b>Other</b>	WiFi 6 Module (OWM002), Mounting bracket for NUC, Mounting bracket for webcam
<b>Remote control</b>	yes (batteries included)

## 08 POWER MANAGEMENT

<b>Power supply unit</b>	internal
<b>Power supply</b>	AC 100 - 240V, 50/60Hz
<b>Power usage</b>	267W typical, 0.5W stand by, 0.3W off mode

## 09 SUSTAINABILITY

<b>Regulations</b>	CB, CE, TÜV-Bauart, EAC, RoHS support, ErP, WEEE, REACH (RoHS)
<b>REACH SVHC</b>	above 0.1%: Lead

## 10 DIMENSIONS / WEIGHT

<b>Product dimensions W x H x D</b>	1957 x 1171 x 86mm
<b>Box dimensions W x H x D</b>	2110 x 1291 x 225mm
<b>Weight (without box)</b>	63.6kg
<b>Weight (with box)</b>	80.2kg
<b>EAN code</b>	4948570124046



TE INTERACTIVE SERIES **iiyama**  
TOUCH PENS WITH DUAL FUNCTION  
TIPS AND ANTI-BACTERIAL COATING



x4

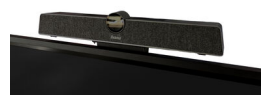
TE INTERACTIVE SERIES **iiyama**  
MOUNTING BRACKET FOR NUC



TE INTERACTIVE SERIES **iiyama**  
MOUNTING BRACKET FOR WEBCAM



TE INTERACTIVE SERIES **iiyama**  
MOUNTING BRACKET FOR WEBCAM



All trademarks and registered trademarks acknowledged. E & O E. Specification subject to change without notice. All LCD's comply with ISO-9241-307:2008 in connection with pixel defects. © IYAMA CORPORATION. ALL RIGHTS RESERVED