

# ChargeLite™ Wall

## Devices

Perfect for up to 16 laptops, Chromebooks, tablets, or any device up to 14" screen.

## Charging

Simultaneous charging ensures all devices are charged in the fastest possible time.

The devices own AC adaptors are neatly stored in the power compartment.

Cable management keeps the leads tidy as they are fed through on to each shelf.

## Safe Power Management as Standard

Soft-start, surge and residual voltage protection ensures the safety of users, devices and the unit.

ChargeLite™ is the only solution in its class to include these critical safety features as standard.

## Construction

Built for longevity with full steel construction to stand the test of time.

Durable finish with antimicrobial paint.

Inbuilt ventilation for an optimal storage and charging environment.

## Colours

Available in Blue (as standard) or Black, Green, Red, and Yellow.

## Fixed Horizontal Shelving

Store your devices on their feet as intended to prevent damage to ports and connectors.

Fixed shelves, rather than pull out shelves, ensure your unit remains stable.

## Locking Options

Triple point locking system.

Available with Keyed Lock, PIN Lock, or RFID Lock.

The power compartment has a separate lockable door, ensuring maximum safety and security.

## Support and Warranty

All our products come with extensive warranty and UK based support.

To find out more visit [lapsafe.com/warranty](https://lapsafe.com/warranty)



ChargeLite™ Wall Unit  
fitted with key lock

## Delivery

Shipped fully assembled by our own team.

Includes product demonstration and removal of all packaging for recycling.

## Sustainability

Long lasting, quality construction built to withstand the test of time.


Built using recycled steel.

Part of our Plant-a-tree scheme – with every product sold LapSafe® plant a tree.

## Made in Britain

As a registered Made in Britain company we use local suppliers and support local businesses wherever possible.

# ChargeLite™ Wall

Product Name	ChargeLite™ Wall
Product Code	CLW/CL/016
Number of Devices	16
Unit Dimension	710w x 677h x 278d
Bay Dimension	408w x 35h x 239d
Weight	35kg
Power Requirements	230v 13-amp socket (Type G or Type F)
Maximum Ratings	230v 12-amps
Maximum Power Consumption	2760 watts
Maximum Heat Output	9820 BTU/hr
Materials	Welded and riveted sheet steel construction. Durable Anti-Microbial paint finish. Available in Blue (standard), Black, Green, Blue, Red and Yellow
Safety	Europe:EN 62368-1 2024 Safety testing is our highest priority. All our products are tested to the latest standards by an independent notified body. Certification extends to electrical components, materials, constructions, components and our procedures.  If you require a copy of our certification, please ask your account manager.
Testing Certification	
PLEASE CHECK COMPATIBILITY OF YOUR DEVICE AND AC ADAPTOR Please contact your account manager for further help or information	

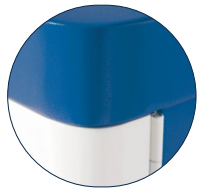
LSSS001210122025\_V1



Triple point locking  
Choice of Key,  
PIN & RFID lock



Recycled sheet steel  
construction with  
rounded corners



Profile cut out shelf  
to aid placing and  
removing devices

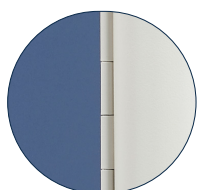
Cable management



Secure installation frame  
for simple installation



Painted in durable  
anti-microbial paint  
to help prevent the  
spread of germs



AC Adaptors are easy  
to install with easy to  
access sockets



Side service area to  
secure AC adaptors

