



**SINGLE  
ARM FOR  
EXTENDED  
REACH**

# BTV503

## FLAT SCREEN WALL MOUNT WITH SINGLE ARM

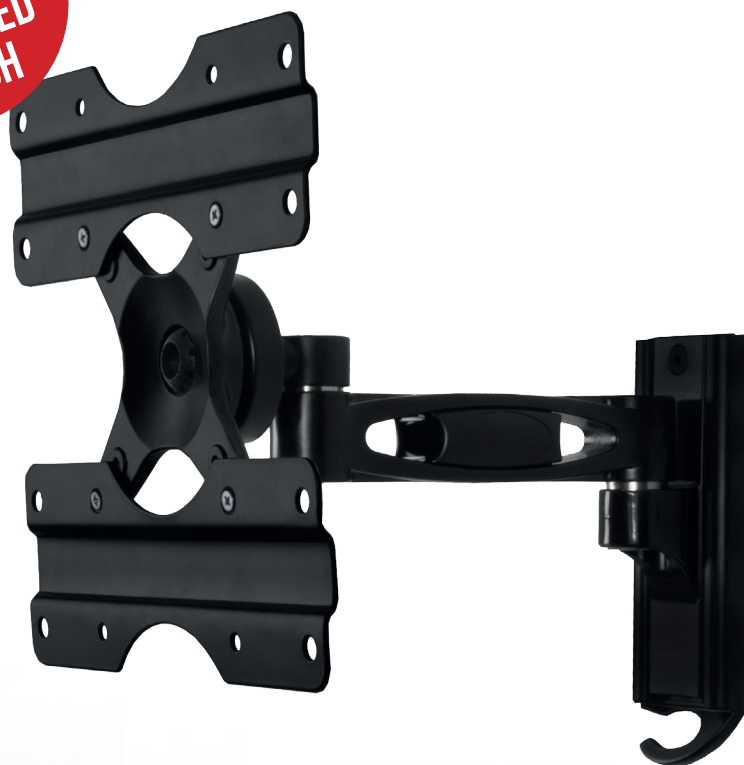
Designed to wall mount small to medium sized screens, this single arm wall mount features a rotating interface with tilt and swivel, allowing quick and easy repositioning of screens as required - the mount can display the screen folded flat against the wall or up to its maximum extension of 240mm. Cable management is included to help make a neat and tidy mounting solution which is ideal for home installations as well as commercial applications.

### SPECIFICATION

Recommended Screen Size	up to 42"
Max Load	25kg
VESA® compatibility	up to 200 x 200
Screen Rotation	360°
Tilt	+/-15°
Swivel	180°
Extension	79 - 240mm
Colour	Black

### FEATURES

- Single arm for extended reach
- Folds flat to the wall
- Interface features tilt, swivel and screen rotation
- Integrated cable management
- Integrated spirit level for easy wall plate levelling during installation
- Simple 'hook-on' installation
- All mounting hardware included



Folds flat to the wall with a distance of only 79mm



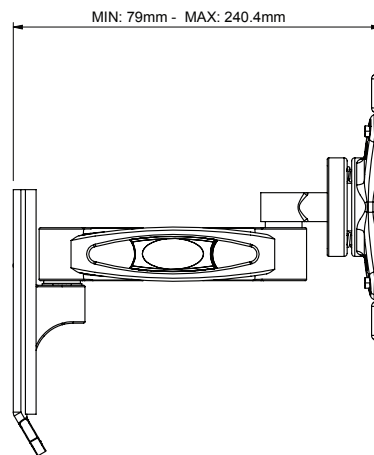
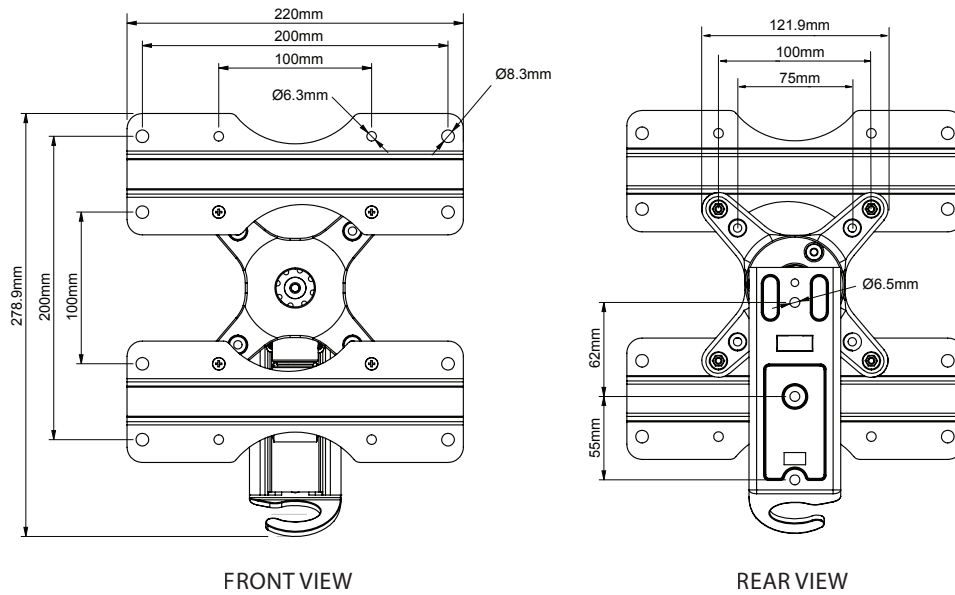
Integrated cable management and spirit level included



Features up/down tilt plus 2 pivot points



Interface allows screen rotation of 360°



SIDE VIEW WITH ARM EXTENDED

**PACKING INFORMATION**

COLOUR:	ORDER REF:	EAN CODE:	MASTER CARTON QTY:	INNER CARTON QTY:	MASTER CARTON WEIGHT:	MASTER CARTON CUBE:
Black	BTV503/B	5019318440618	6	0	12.06kg	0.036cbm

**ACCESSORIES AND SIMILAR PRODUCTS TO THE BTV503**



**Flat Screen Wall Mount with Tilt & Swivel** designed for screens up to 42"

**Double Arm Wall Mount with Tilt & Swivel** designed for screens up to 42"

**AV Component Shelf** designed for holding all common AV equipment

**Universal Soundbar Mount** fits directly to BTV503 to mount a Soundbar under your screen