

ChargeLite™ Desk

AC Charging Desk Unit

Devices

Perfect for up to 10 laptops, Chromebooks, tablets, or any device up to 14" screen.

Charging

Simultaneous charging ensures all devices are charged in the fastest possible time.

The devices own AC adaptors are neatly stored in the power compartment.

Cable management keeps the leads tidy as they are fed through on to each shelf.

Safe Power Management as Standard

Soft-start, surge and residual voltage protection ensures the safety of users, devices and the unit.

ChargeLite™ is the only solution in its class to include these critical safety features as standard.

Construction

Built for longevity with full steel construction to stand the test of time.

Durable finish with antimicrobial paint.

Inbuilt ventilation for an optimal storage and charging environment.

Colours

Available in Blue (as standard) or Black, Green, Red, and Yellow.

Fixed Horizontal Shelving

Store your devices on their feet as intended to prevent damage to ports and connectors.

Fixed shelves, rather than pull out shelves, ensure your unit remains stable.

Locking Options

Triple point locking system.

Available with Keyed Locks, PIN Locks, or RFID Locks.

The power compartment has a separate lockable door, ensuring maximum safety and security.

Support and Warranty

All our products come with extensive warranty and UK based support.

To find out more visit lapsafe.com/warranty



ChargeLite™ 10 Desk Unit
fitted with key lock

Delivery

Shipped fully assembled by our own team.

Includes product demonstration and removal of all packaging for recycling.

Sustainability

Long lasting, quality construction built to withstand the test of time.

Built using recycled steel.


Part of our Plant-a-tree scheme – with every product sold LapSafe® plant a tree.

Made in Britain

As a registered Made in Britain company we use local suppliers and support local businesses wherever possible.

ChargeLite™ Desk

AC Charging Desk Unit

Product Name	ChargeLite™ Desk
Product Code	CLD/CL/010
Number of Devices	10
Unit Dimension	451w x 436h x 405d
Bay Dimension	408w x 35h x 239d
Weight	20kg
Power Requirements	230v 10-amp socket (Type G or Type F)
Maximum Ratings	230v 10-amps
Maximum Power Consumption	2300 watts
Maximum Heat Output	7848 BTU/hr
Materials	Welded and riveted sheet steel construction. Durable Anti-Microbial paint finish. Available in Blue (standard), Black, Green, Blue, Red and Yellow
Safety	Europe:EN 62368-1 2024 Safety testing is our highest priority. All our products are tested to the latest standards by an independent notified body. Certification extends to electrical components, materials, constructions, components and our procedures. If you require a copy of our certification, please ask your account manager.
Testing Certification	
PLEASE CHECK COMPATIBILITY OF YOUR DEVICE AND AC ADAPTOR Please contact your account manager for further help or information	

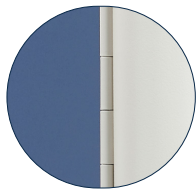
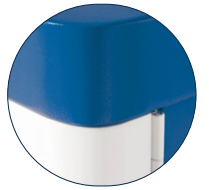
LSSS001010122025_V1



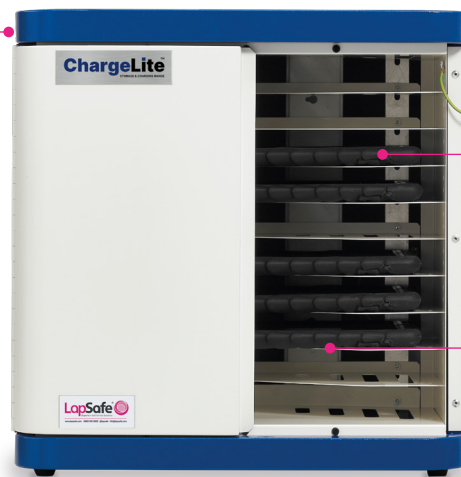
Triple point locking
Choice of Key,
PIN & RFID lock



Recycled sheet steel
construction with
rounded corners



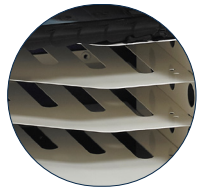
Painted in durable
anti-microbial paint
to help prevent the
spread of germs



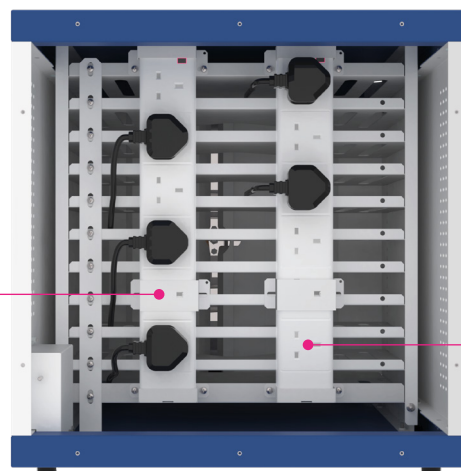
Cable management



Profile cut out shelves
to aid placing and
removing devices



AC Adaptors are easy to install
with easy to access sockets



Rear service area to
secure AC Adaptors

