

# BrightSign® XD6

Exceptional 4K video and graphics performance - Deployable anywhere.

BrightSign XD6 leverages the flexibility of Power over Ethernet (PoE+) to deploy high-performance 4K graphics and stream profoundly captivating 4K video - anywhere.

## Immersive Engagement

Dynamic and responsive interactions.



- Responsive multi-touch engagement
- Immersive sensor & light controls
- Robust 2D motion graphics

## Centerpiece Visuals

4K visual impressions.



- Striking 4K60p video
- Dual 4K video decoding
- Full HD video rotation

## Interactive Journeys

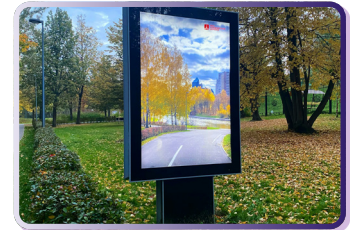
Versatile and unique experiences.



- Personalized engagement
- Usage tracking & analytics
- Measurement & data integrations

## Deploy Anywhere

Set up creative and high-performance installations



- Power the player and peripherals via PoE+
- 4k graphics support
- 4K IP Streaming



## XD236

### Standard I/O Package

Seamless 4K graphics and pristine 4K 60Hz playback, complemented by PoE+, additional internal memory for complex applications, and the option of secure SSD storage.

## XD1036

### Expanded I/O Package

Expands connection and engagement options with serial along with USB-A and USB-C ports.



## The BrightSign XD6 Advantage

- Deploy high-performance and creative experiences anywhere using the flexibility of PoE+
- Stellar 4K or dual 4k video, ideal for on-screen and projected displays, and support for 10-bit HDR
- Deploy immersive and captivating 4K graphics
- Expandable internal storage via an M2 interface SSD storage option
- Operate with unparalleled reliability, security, and sustainability on BrightSignOS™
- Reduce total cost of ownership with complimentary remote player management and controls
- Achieve CMS choice flexibility with a trusted global network of leading integrated partner solutions
- Leverage an integrated Neural Processing Unit (NPU) which enables BrightSign players to run powerful AI applications without compromising on video or graphics performance

# BrightSignOS™

The power of purple.

The only purpose-built operating system that brings unrivaled reliability, security, signage power and sustainability to every BrightSign player.



## SECURE

**Unrivaled security** that reduces risk to near zero with purpose-built file system designed to remove vulnerabilities and only runs signage.

- Exceptionally protected operating system with a secure digital signature
- Runs a singular signage application to protect against viruses
- Configurable to any type of security profile
- Security extends to integrated CMS solutions



## RELIABLE

**Legendary reliability** with unmatched uptimes and a lower total cost of ownership.

- Persistent self-healing protocols resulting in unmatched uptimes
- Secure built-in remote player management and monitoring
- Remote diagnostics and controls to reduce costly on-site visits
- Removable storage that avoids rip/replace situations



## SUPERIOR

**Superior signage performance** for simple to sophisticated experiences.

- Optimized to run cutting-edge video and motion graphics
- Abundant signage features available with free authoring software
- Integrated with hundreds of global CMS solutions
- Highly extensible to securely run specialized signage technologies



## SUSTAINABLE

**Unmatched sustainability** through updates that stay ahead of market demands.

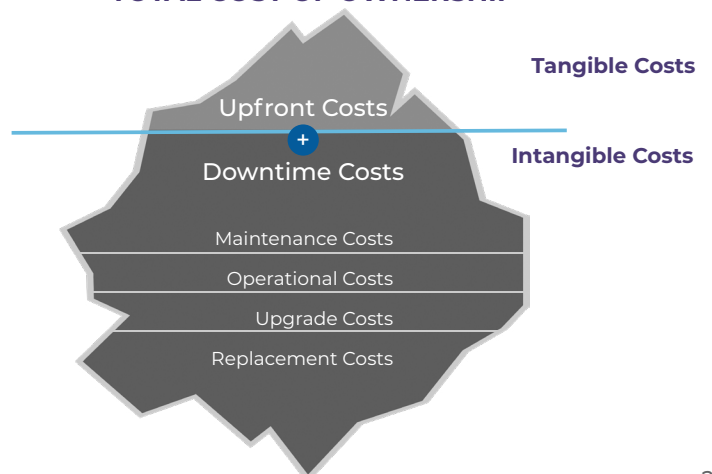
- Low power requirements with high performance
- Guaranteed long life cycle support for unprecedented longevity
- Free updates applied on-demand and consistent across hardware generations
- Remote re-provisioning at any time to ensure flexibility

## Invest in BrightSignOS to achieve long-term success

Designed to reduce risk and save on signage.

Downtime is the most expensive investment in signage that often gets overlooked. Failure doesn't happen at implementation, it happens after. BrightSignOS™ is designed to solve and mitigate ongoing risks to avoid rip and replace situations resulting in huge savings throughout the long life of your player.

### TOTAL COST OF OWNERSHIP



# Hardware Specifications

## Front View



## Rear View



- USB Type C port: supports high-speed host mode & provides 5V/1A power to peripheral devices
- USB Type A port: provides 5V/1A power to peripheral devices
- GPIO port: 8 bi-directional GPIOs
- Audio port: supports analog & SPDIF digital
- Real time clock: 14-day life

# Software & Services

A scalable cloud infrastructure that securely connects BrightSign players to a suite of integrated services for remote device, content, and network management.

**bsn.Control**  
Free remote player monitoring and control service with a choice of CMS.

**bsn.Content**  
Paid CMS service for cloud-based content, network and user management.

**Partner CMS Solutions**  
Flexible choices with seamless player integrations.

**brightAuthor connected**  
Free software to provision players, access BSN.Cloud services, and connect to a variety of partner CMS solutions.



BSN.Cloud Solution

# Technical Specifications

	XD236	XD1036
I/O Package	Standard	Expanded
<b>AI ENABLEMENT</b>		
Neural Processing Unit (NPU)	√	√
<b>VIDEO &amp; HTML5 ENGINES</b>		
4K video decoding	Dual 10-bit at 60p	Dual 10-bit at 60p
Full HD at 60p video decoding	√ (dual)	√ (dual)
4K video rotation	√	√
HTML5 Performance	Smooth full screen 2D WebGL motion	Responsive multi-touch 2D WebGL
HTML support: HTML5, CSS, JavaScript, SVG, WebGL, and Chromium compatible	√	√
Supports 4K IP streaming	√	√
Image & graphics resolution	4K	4K
10-bit HDR support	√	√
<b>MEDIA FORMATS</b>		
4K Video codecs: H.265/HEVC, H.264/AVC, VP9	√ H.265, H.264 at 60p	√ H.265, H.264 at 60p
4K Video Containers: MP4, .MOV, .MKV, .WEBM, .TS, .MPG, .MPEG, .PS, .M2P, .MPV, .AVI, .HEVC, .H264, .AV1, .VP9, and .MJPEG	√	√
Full HD Video Codecs: H.265/HEVC, H.264/AVC, VP9, MPEG 4 part 2, MPEG1 video, MPEG2 video	√	√
Full HD Video Containers: MP4, .MOV, .MKV, .WEBM, .TS, .MPG, .MPEG, .PS, .M2P, .MPV, .AVI, .HEVC, .H264, .AV1, .VP9, and .MJPEG	√	√
Images: BMP, JPEG, PNG	√	√
Audio: MP2, MP3, AAC and WAV (eAC3 is passed through)	√	√
<b>DISPLAY RESOLUTIONS</b>		
Supports all common screen resolutions up to 4K	√	√
Supports <a href="#">additional</a> & <a href="#">customizable</a> display resolutions with unique aspect ratios	√	√
<b>BRIGHTSIGN ACCESSORIES</b>		
BP200 & BP900 USB Button Pads		√
MicroSD Class 10 Cards (various capacities)	√	√
256GB PCIe NVMe M.2 SSD	√	√
BrightSign Mobile USB Modem & Service		√
<b>MISCELLANEOUS</b>		
Operating Temperature Range	0°C to 50°C	
Dimensions (W x D x H)	205 x 185.9 x 19.2mm	
Shipping Weight / Player Weight	1.3 kg / 0.59 kg	
Locking Power Supply	12V / 3A	
Multi-Country Power & Regulatory Approvals	√	√
Built-in Wall Mounting	√	√

\*Warranty program applies to Series 5 players purchased from BrightSign after January 1, 2025. Warranty program does not apply to accessories. Learn more at <https://www.brightsign.biz/brightsign-players/warranty/>.